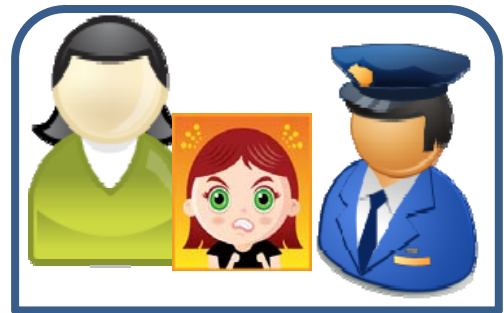




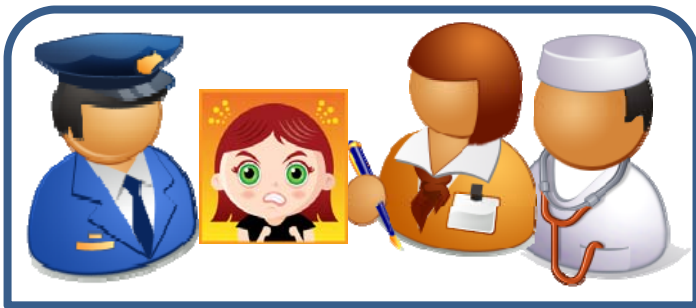
You need to get help for a loved one by using the Involuntary Commitment process



- A. You present facts before a magistrate that the individual has a mental illness and is dangerous to self or others.
The magistrate agrees to initiate a petition.



- B. The magistrate will issue a custody order.
A law enforcement officer will pick up the individual.



- C. The officer will transport the individual to an examination site
(a crisis center or an emergency department).



- D1. The examiner will assess the individual
and consider the facts on the petition
to determine if the individual meets inpatient
criteria and requires hospitalization.



- D2. Staff at the exam site will locate an inpatient bed
for the individual and care for her while waiting.



- E. When a bed is available, an officer
will arrive to transport the individual
to the inpatient facility for admission.